

THE ART OF CONTRACT

MATERIALS BOOK

Montbel
made in Italy

textiles index

020	seta . cat.A . eco-leather
022	perla . cat.B . eco-leather
024	advan . cat.B . eco-leather
027	uni . cat.B
030	danzi . cat.B
033	vera . cat. B
035	extrema . cat.C . eco-leather
038	super . cat.C
041	vegas . cat. C
042	luna . cat.D
045	popi . cat.D
046	bolle . cat.D
047	tobia . cat. D
049	polo . leather

I colori chiari non devono essere messi a contatto con tessuti e capi di abbigliamento trattati con coloranti non fissati (ad esempio jeans o derivati) o con scarse solidità di tintura, onde evitare macchie e aloni di coloranti di cui non possiamo garantire la pulitura. Vi informiamo di non poterci ritenere responsabili di danni causati dall'uso improprio dei nostri spalmati.

To avoid permanent stains, light coloured products should not be brought into contact with textiles and clothing coloured with unfixed dyes. We cannot guarantee the ability to remove unknown dyes from light coloured products. Please note that we cannot be liable for damages caused by inappropriate use of our products.

La Montbel si riserva di applicare i tessuti utilizzando il verso più consono all'articolo prescelto.

Unless specified otherwise Montbel will use its discretion to determine the direction of fabric than best suits the model selected.

SETA . Cat. A

ecopelle . eco-leather



Composizione / Composition 100% Poliestere/ Polyester	Peso / Weight 820 g/m ²	Solidità del colore/ Colour fastness 4	Abrasiono Martindale/ Abrasion Martindale >200.000 cycles
Resistenza allo strappo/ Tear strength 60 N/cm - Weft 40 N/cm - Warp	Resistenza alla rottura/ Breaking strength 100 N/cm - Weft 90 N/cm - Warp	Resistenza al calore/ Heat resistance 100C°	Resistenza al fuoco/ Fire resistance UNI EN 1021 parts 1-2, BS 5852 cigarettes & match, M2 France (Optional)
Antihydrolysis Jungle Test 10 weeks	Manutenzione/ Maintenance Non usare mai cera, smacchiatori o solventi./ Never use polish, stain removers or solvent. ☒ ☒ ☒ ☒		

PERLA . Cat. B

ecopelle . eco-leather



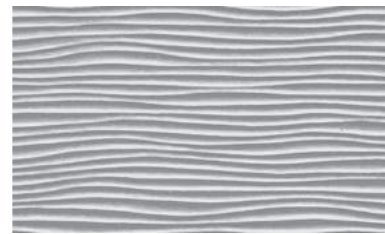
NUBE



CREMA



BIANCO



PLATA



PERLA



ALU



TAUPE



VISION



BRONCE



CARRO



MARRON



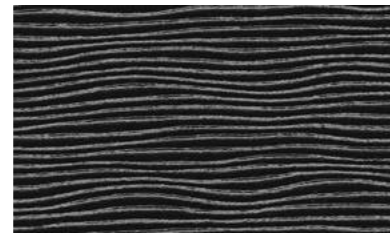
ANTHRACITE



TITAN



NEGRO



ZERO



AQUAMARINE



LIGHT BLUE



SKY BLUE



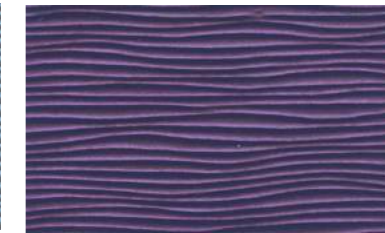
OLTRAMARE



COBALT



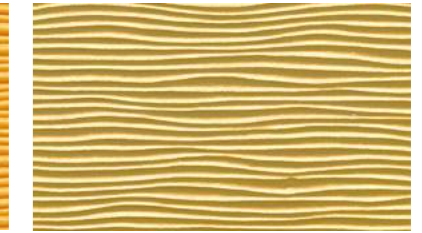
NAVY



LILA



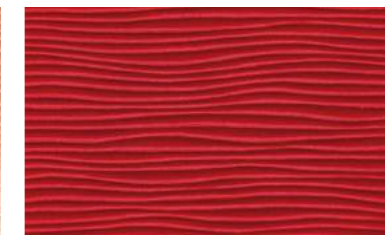
YELLOW



ORO



ORANGE



ROJO



VINO



KIWI



GREEN



SALVIA

Composizione / Composition
70% PVC - 30% PV

Peso / Weight
820 g/m

Supporto/ Back coating
100% Polyester

Resistenza al fuoco/ Fire resistance
EN 1021 Part 1&2, BS 5852 Part 1&2

**Abrasione Martindale/
Abrasion Martindale 12 Kpa**
200.000 cycles

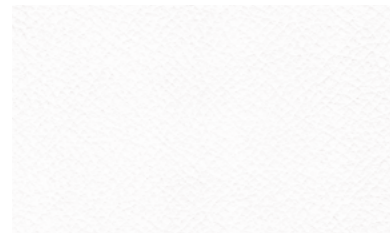
**Solidità del colore alla luce/
Colour fastness to light**
4

Resistente/ Resistant
10 weeks = +/- 10 years
Jungle test

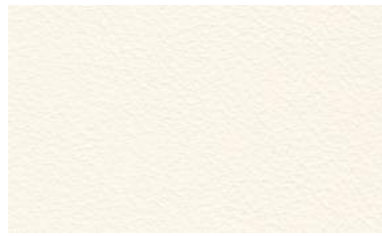
Esente da/ Free
Ftalati/ Phthalates
Meet Reach Standard - Eco & Free

ADVAN . Cat. B

ecopelle . eco-leather



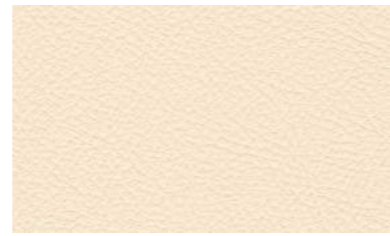
2201



0832



2464



3464



5464



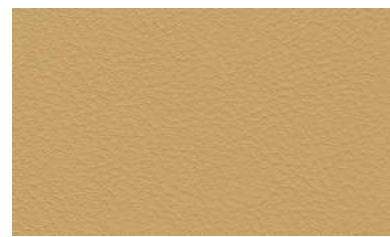
9014



0723



2623



8872



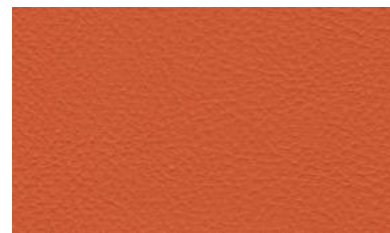
8214



3972



2972



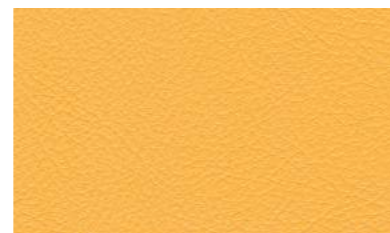
2213



0564



4114



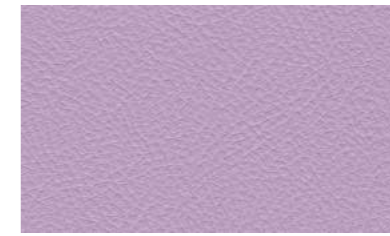
8832



1464



6523



2932



6014



8523



4214



4932



9114



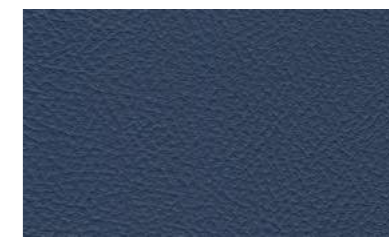
0214



1214



6564



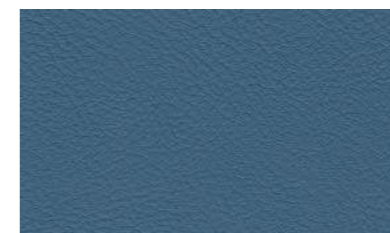
9972



3214



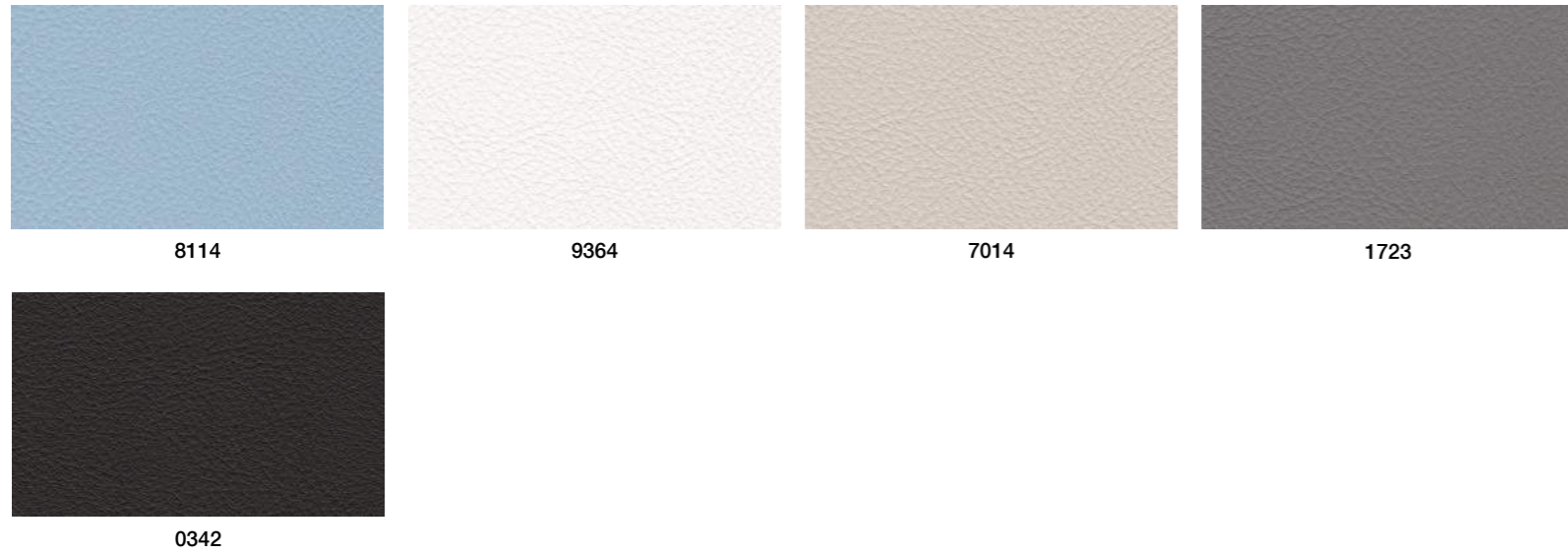
2042



8972



7972



UNI . Cat. B



Composizione / Composition

83% PVC - 17% CO/PL

Peso / Weight

650 +/-50 g/m²
DIN EN ISO 2286-2

Resistenza al fuoco/ Fire resistance

Class 1/IM
DIN 75200, BS 5852, B1AT, 5.3-CH -
FMVSS 302, DIN EN1021 PARTE 1+2,
M2, UNI 9175 ITALIA

**Abrasione Martindale/
Abrasion Martindale 12 Kpa**

100.000 cicli/ cycles
DIN EN ISO 13934-1, BS 5690

**Solidità del colore alla luce/
Colour fastness to light**

< 6 scala blu/ blue scale

**Flessibilità/ Flexibility
Temp. 20 C°**

100.000 cicli/ cycles
DIN 53351



Composizione / Composition

100% Trevira CS

Peso / Weight

435 g/m (14.03 oz/lin. yd.)

Pilling

5
Scale 1-5, max. 5 - EN ISO 12945-2

**Resistenza all'abrasione (Martindale)/
Abrasion reistance (Martindale)**

100.000 rubs

**Resistenza del colore alla luce/
Colour fastness to light**

5-8
Scale 1-8, mx. 8 - EN ISO 105-B02

**Solidità del colore allo sfregamento/
Colour fastness to rubbing**

4-5 umido-secco/wet-dry
Scale 1-5, max. 5 - EN ISO 105-X12

Infiammabilità/ Flammability

EN 1021 1&2, BS 5852 0&1, BS5852
Crib 5, DIN 4102.B1, FAR/JAR 25 853,
önorm B3825 B1-Q1, NFP92-503/4/5,
M1, Class Uno UNI 9175 Class 1,
EMME/BS 7116 Med. Hazard, AM 18 NF
D80-013, CA TB 117-2013

US ACT

AATCC 16 Lightfastness pass, AATCC
8 or 116 wet/dry crocking, California
Bulletin CAL117-E Class 1 ASTM
D4157-07 Wyz Abrasion (HDU) ASTM
D3511 Pilling, CA TB 117-2013

DANZI . Cat. B



0026

0032

0029

0056



0063

0022

0060

0015



0062

0033

0058

0028



0053

0034

0035

0036

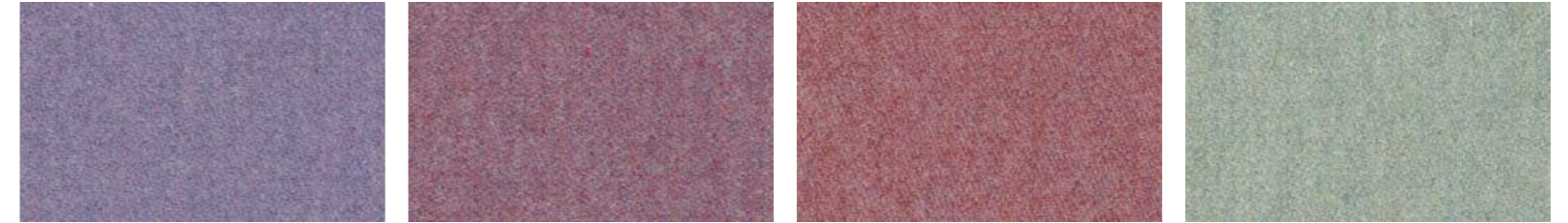


0020

0050

0037

0038

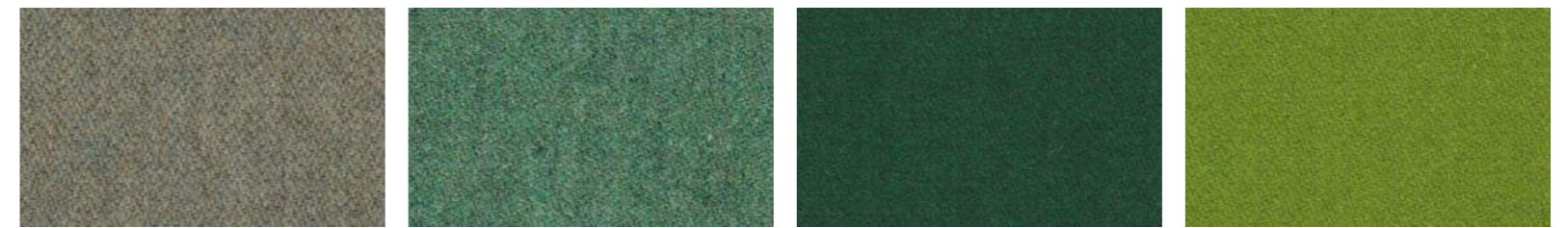


0039

0040

0041

0042



0043

0064

0052

0027

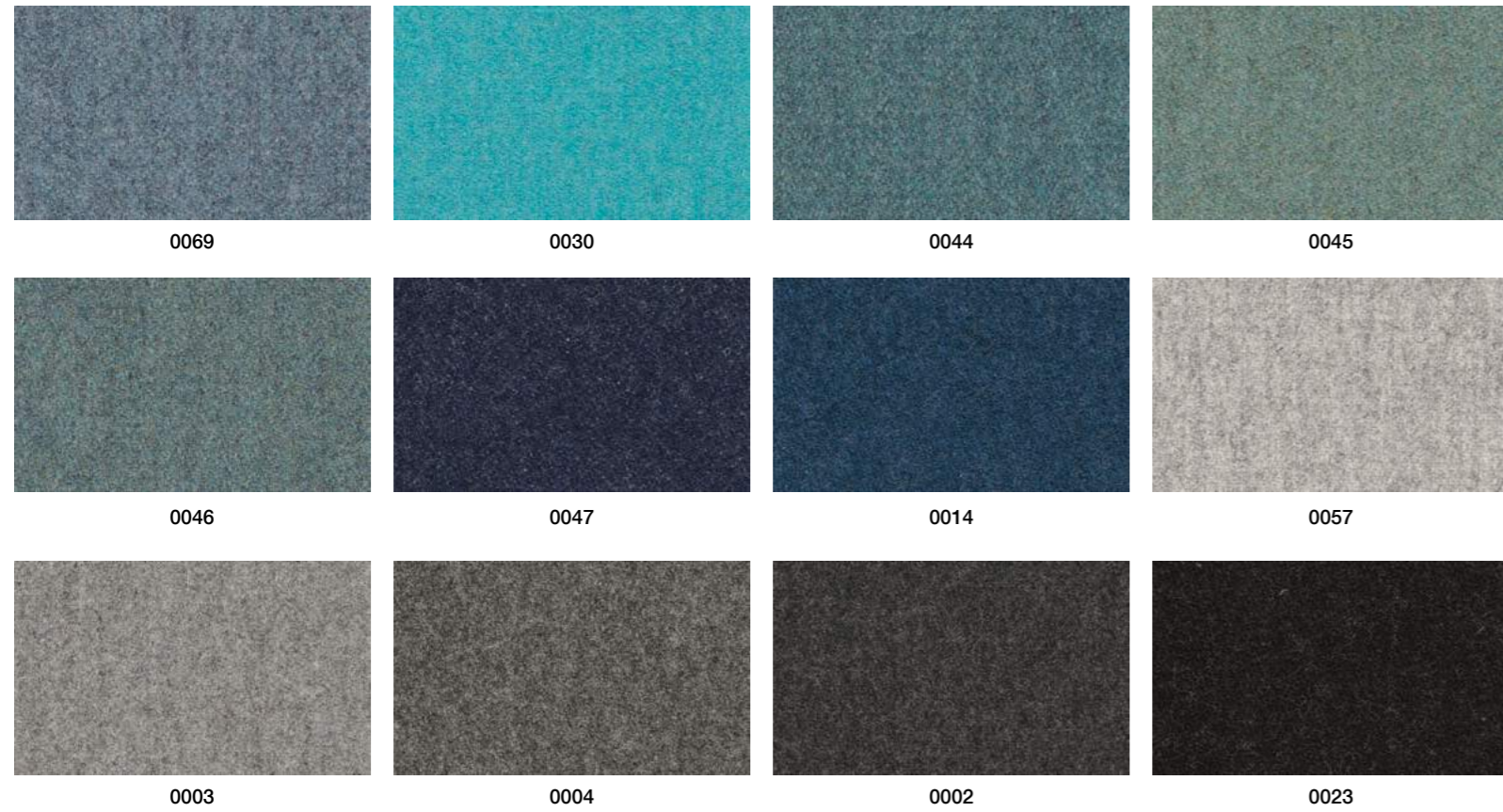


0059

0061

0055

0016



VERA . Cat. B



Composizione / Composition
70%WO - 20% PL - 5% PA - 5% AF

Peso / Weight
490 g/m

Martindale
> 40.000
(UNI EN ISO 12947 12 kpa)

Pilling
500 cycles, 4/5 - 1000 cycles 4, 2000
cycles, 3-4 - 5000 cycles, 3-4 (12945-2)

**Solidità del colore alla luce /
Colour fastness to light**
4-5
UNI ISO 105 B02

**Solidità del colore allo sfregamento /
Colour fastness to crocking**
4-5 Dry / A secco
4 Wet / Ad umido

**Resistenza al fuoco /
Fire resistance**
Cigarettes Test (EN 1021/1)
Match Test (EN 1021/2)

**Manutenzione /
Maintenance**
☒ ☒ ☒ ☒ ☒ ☒



EXTREMA . Cat. C ecopelle . eco-leather



 **ACTIVE LINE STAIN PROTECTION**

Composizione / Composition	Peso / Weight	Pilling	Resistenza all'abrasione / Abrasion resistance
100% Polyester with flame retardant backcoating	765 gr/m	5	73.000

Solidità del colore alla luce artificiale / Colour fastness to artificial light	Resistenza al fuoco / Fire resistance
5	DIN 4102 (B2), EN 1021 1&2, BS5852 crib5 1%2



Composizione / Composition

63% PU - 37% CO

Peso / Weight

480 g/m²

**Resistenza all'abrasione/
Abrasion resistance**

150.000 rubs
EN ISO 12947-2/2000

**Solidità del colore alla luce/
Colour fastness to light**

5-6 - Scale 1-8 max. 8
EN ISO 105-B02

Solidità al sudore/ Solidity to sweat

Acid/alkaline 4-5 - Grey scales
UNI EN ISO 105 E04/98

Tropical test

70 C° - Days 60 Unchanged

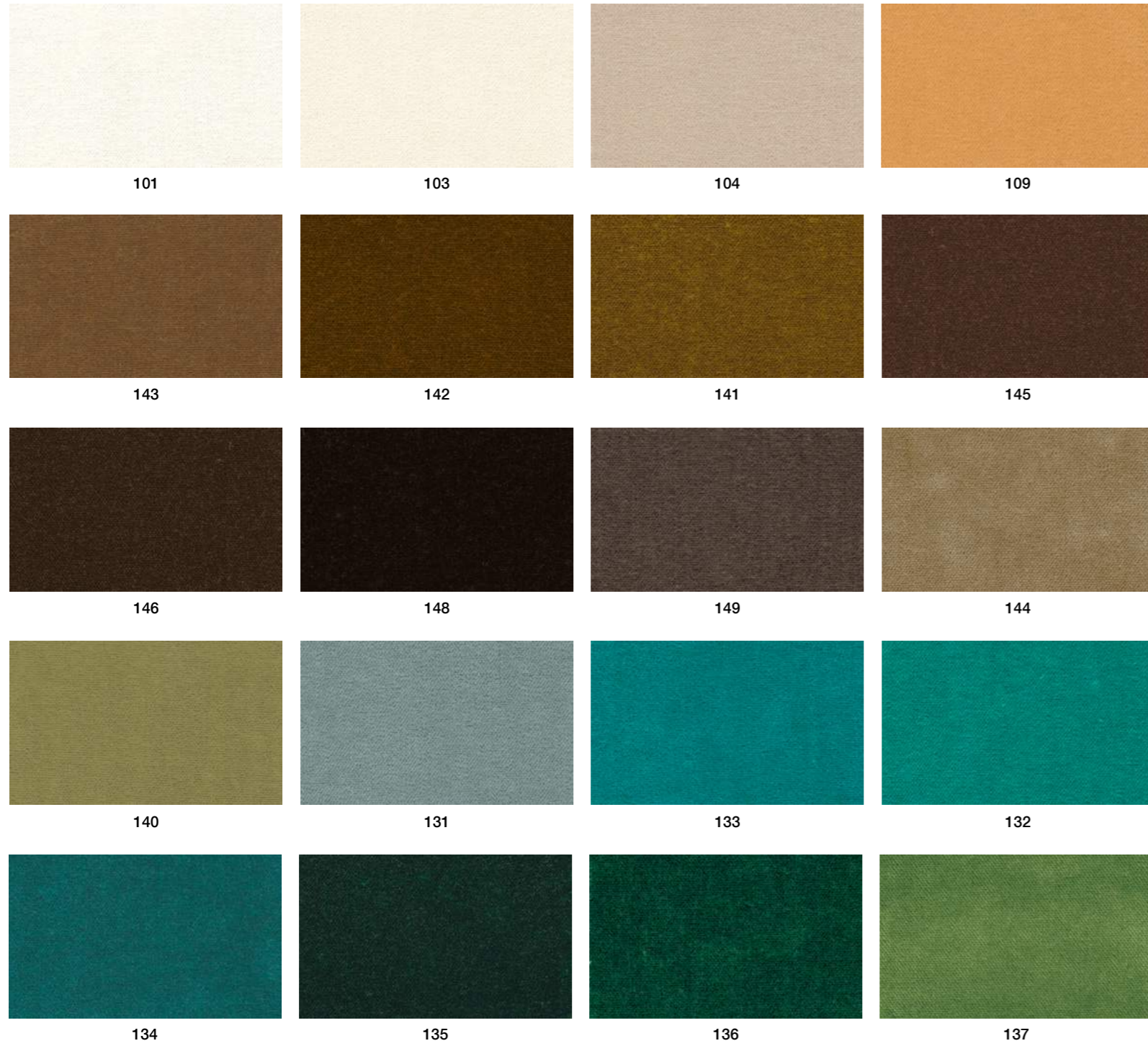
Resistenza al fuoco/ Fire resistance

IMO Resolution A.652(16)/89, EN 1021-2/93, BS 5852-1/79, BS5859/90 S.4 crib 5, UNI 9175/87e 9175 FA-1/94 Classe 1IM (uno I emme)

Trattamento/ Treatment

Ultra-fresh, antibatterico, antiacaro.
Determina freschezza igienica duratura./
Ultra-fresh, antimicrobial, antiacarus.
It determines durable hygienic freshness.

SUPER . Cat. C





Composizione / Composition

100% PES FR

Peso / Weight

400 g/m²

Pilling

5
UNI EN ISO 12945-2

**Resistenza all'abrasione/
Abrasion resistance**

60.000 cycles
UNI EN ISO 12947-2

**Solidità del colore allo sfregamento a secco/
Colour fastness to dry rubbing**

4
UNI EN ISO 105-X12

**Solidità del colore allo sfregamento ad umido/
Colour fastness to wet rubbing**

4
UNI EN ISO 105-X12

**Solidità del colore alla luce/
Colour fastness to light (Xenotest)**

>5 blue scale
UNI EN ISO 105-B02

Resistenza la fuoco/ Fire resistance

EN 1021-1, EN 1021-2, UNI 9175 - 1IM,
UNI 9177 - Class1, BS 5852 - CRIB 5,
NF 92.503-M1, DIN 4102 -B1

VEGAS . Cat. C



Composizione / Composition

100% PES FR
Polyester fireretardant

Peso / Weight

579 gr/m

Pilling

4-5

**Resistenza all'abrasione /
Abrasion resistance**

50.000

**Solidità del colore alla luce artificiale /
Colour fastness to artificial light**

4-5

**Resistenza al fuoco /
Fire resistance**

DIN 4102 (B1), EN 1021 1&2,
BS5852 CRIB5 1&2, UNI 9177 (Classe Uno), IMO Part 7&8

LUNA . Cat. D

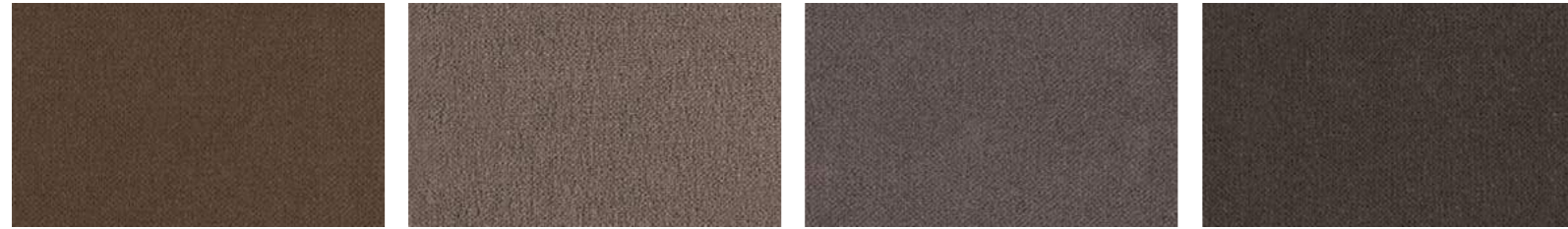


01

319

1714

707



1713

702

28

1712

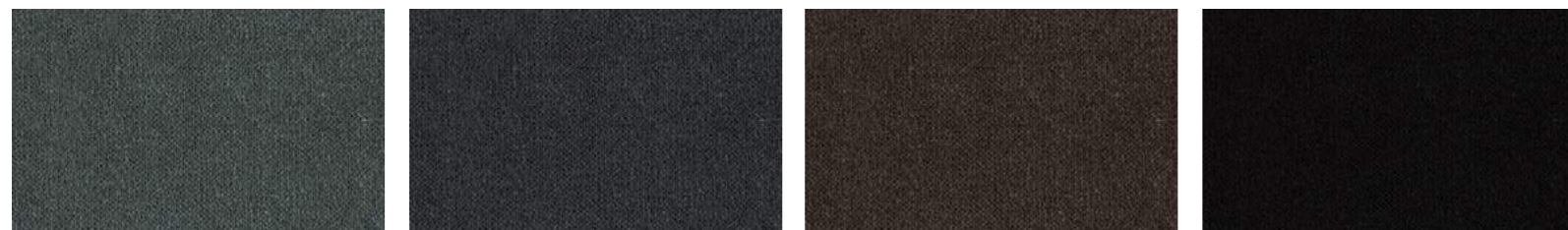


1715

315

1716

1717



316

1718

1711

317



9000

1705

323

07



11

1710

311

1703



3003

706

307

2100



325

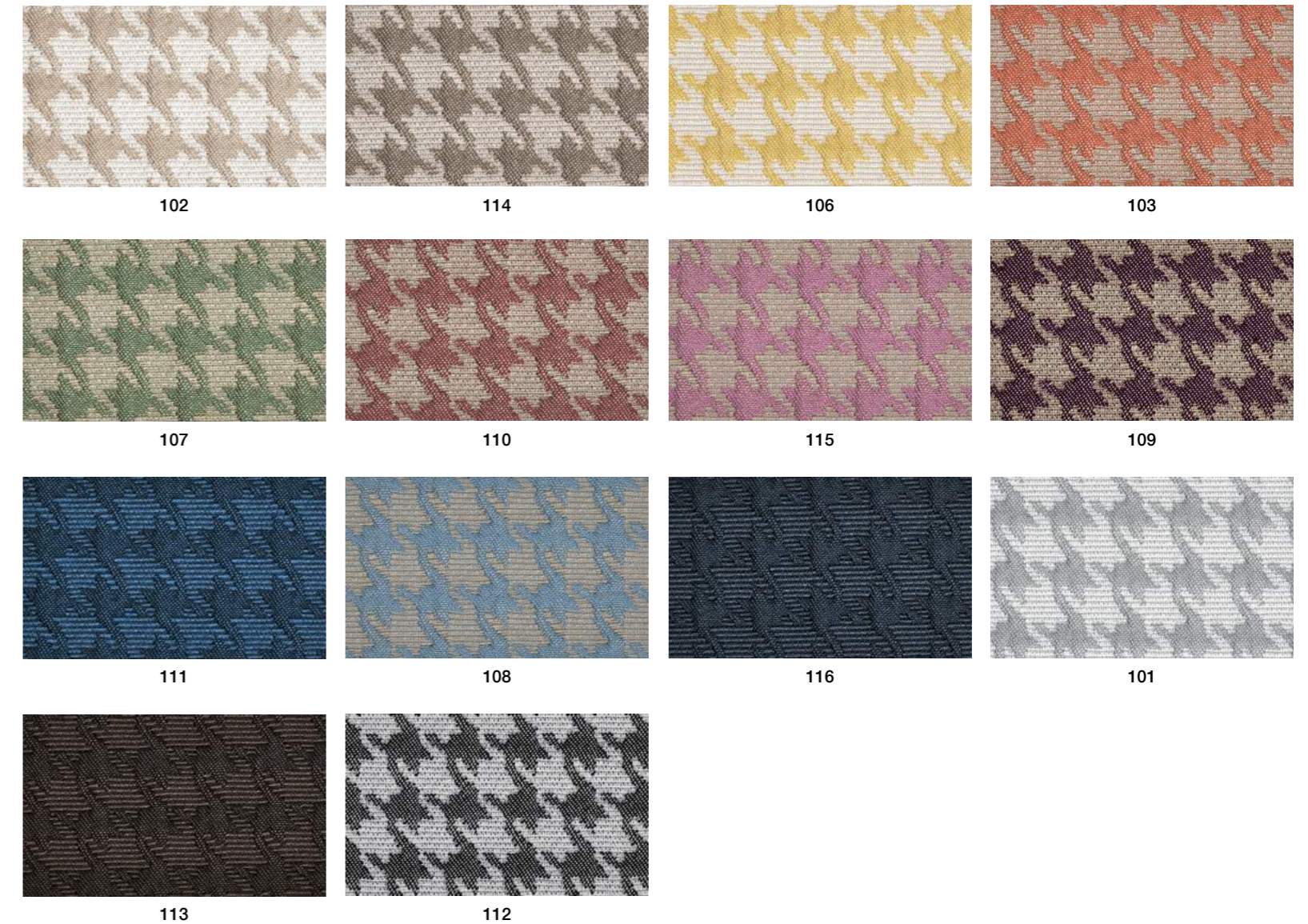
16

20

1704



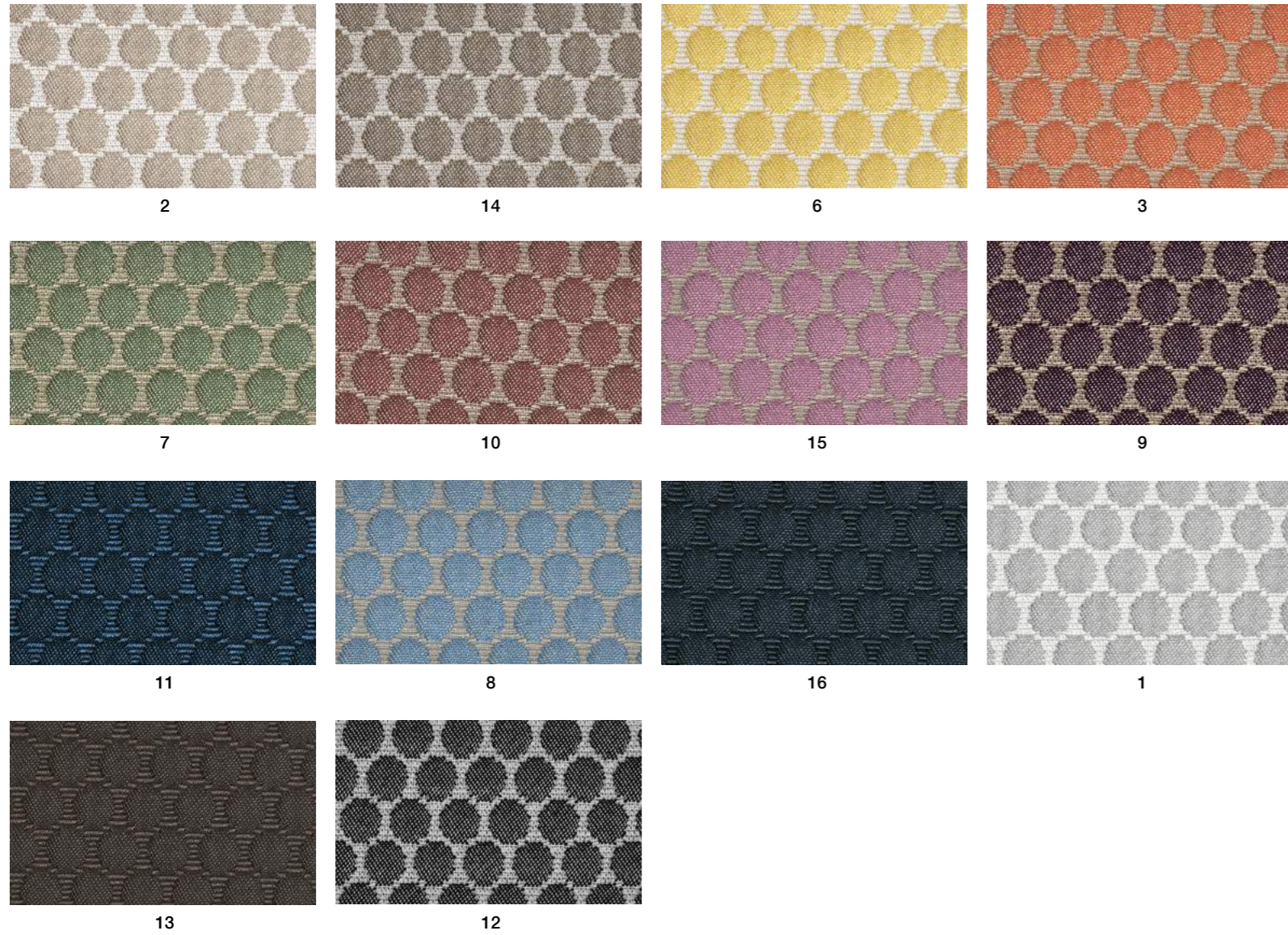
POPI . Cat. D



23	17	25	
Composizione / Composition	Peso per metro lineare / Weight per line meter	Abrasiono martindale / Martindale abrasion	Solidità del colore alla luce artificiale / Colour fastness to artificial light
100% Trevira CS	605 g/m	100.000 rubs EN ISO 12947-2	4/5 - 5 ISO 105-B02
Resistenza del colore allo sfregamento a secco / Colour resistance to rubbing (dry)	Resistenza del colore allo sfregamento ad umido / Colour resistance to rubbing (wet)	Resistenza la fuoco / Fire resistance	
5 UNI EN ISO 105-X12	4/5 - 5 UNI EN ISO 105-X12	Class 1 IM, M, B1 DIN 4102, EN 1021, BS5852 crib5, NFTA 701, EN 13733, IMO 7-8, California TB 117	

Composizione / Composition	Peso / Weight	Pilling	Resistenza all'abrasione / Abrasion resistance
100% PES	420 g/m ²	4 UNI EN ISO 12945-2	35.000 cycles UNI EN ISO 12947-2
Solidità del colore alla luce artificiale / Colour fastness to artificial light	Solidità del colore allo sfregamento a secco / Colour fastness to rubbing (dry)	Solidità del colore allo sfregamento ad umido / Colour fastness to rubbing (wet)	Resistenza al fuoco / Fire resistance
5/6 blue scale UNI EN ISO 105-B02	4/5 grey scale UNI EN ISO 105-X12	4/5 grey scale UNI EN ISO 105-X12	BS5852:2006 (p.11 CRIB 5), EN 1021-1, EN 1021-2, UNI 9175:2010 Classe 1 IM

BOLLE . Cat. D



Composizione / Composition	Peso / Weight	Pilling	Resistenza all'abrasione / Abrasion resistance
100% PES	420 g/m ²	4 UNI EN ISO 12945-2	35.000 cycles UNI EN ISO 12947-2
Solidità del colore alla luce artificiale / Colour fastness to artificial light	Solidità del colore allo sfregamento a secco / Colour fastness to rubbing (dry)	Solidità del colore allo sfregamento ad umido / Colour fastness to rubbing (wet)	Resistenza al fuoco / Fire resistance
5/6 blue scale UNI EN ISO 105-B02	4/5 grey scale UNI EN ISO 105-X12	4/5 grey scale UNI EN ISO 105-X12	BS5852:2006 (p.11 CRIB 5), EN 1021-1, EN 1021-2, UNI 9175:2010 Classe 1 IM

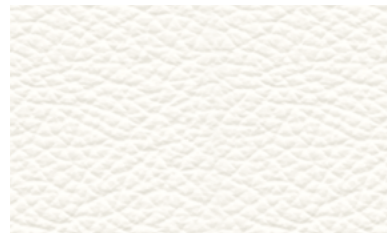
TOBIA . Cat. D



Composizione / Composition	Peso / Weight	Pilling	Resistenza all'abrasione / Abrasion resistance
26% Viscose - 20% Acrylic 14% Cotton - 12% Polyester 12% Flax - 8% Wool - 8% Modal	1060 gr/m	3/4	30.000 rubs
Resistenza al fuoco / Fire resistance	Resistenza al fuoco / Fire resistance		
5	BS5852 crib5		

POLO

pelle . leather



810



872



811



815



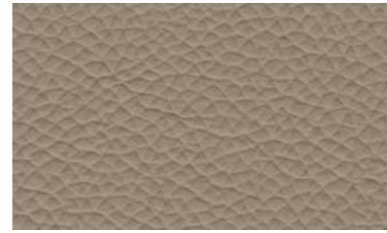
813



812



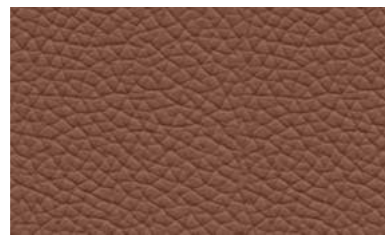
826



931



823



821



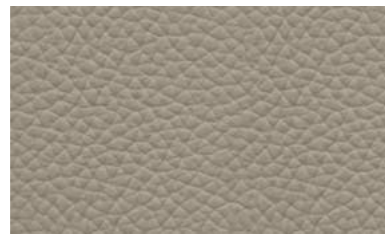
822



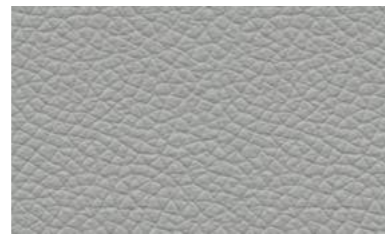
824



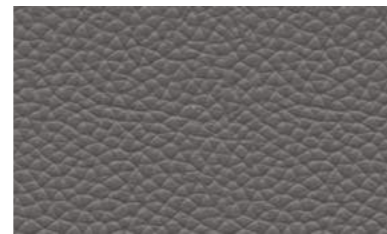
845



827



854



858



859



825



860



847



848



849



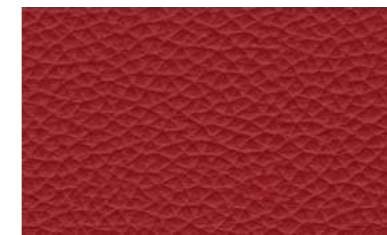
844



850



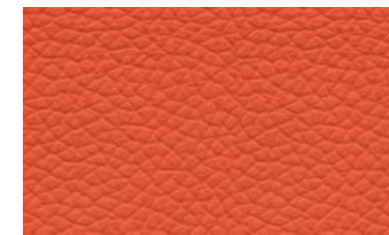
843



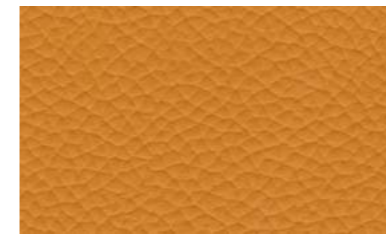
842



840



839



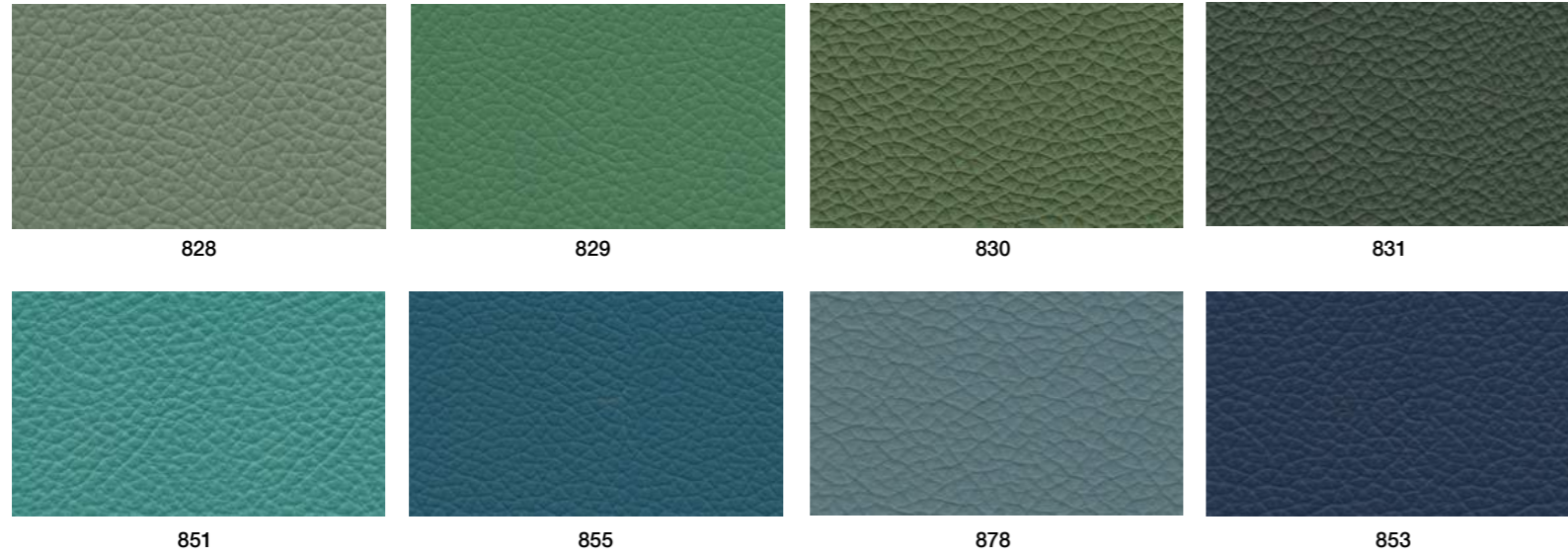
838



837



881



Origine / Origin	Peso / Weight	Spessore/ Thickness	Solidità del colore alla luce/ Colour fastness to light
Raw Hides (UE)	700 g/m ²	0.9 - 0.11 mm	Value 7 blue scale
Solidità dello sfregamento ad umido/ Wet rub fastness	Solidità dello sfregamento a secco/ Dry rub fastness	Resistenza alla flessione ripetuta/ Flex crack resistance	Resistenza la fuoco/ Fire resistance
150 cycles value 4 grey scale ISO 11640	500 cycles value 5 grey scale ISO 11640	20.000 cycles ISO 5402	British standard BS5852 Part 1 NI/O: Cigarette test n°1 Match test; Imo FTP: Part 8 - Resolution A.652 (16), NI/O: Cigarette test NI/1: Match test

credits

AD . Daniele Lo Scalzo Moscheri

Photo . emozioni.com

Fotolito . lucegroup.it

Stampa . sincromia.it cod. 190373

Aggiornamento Maggio 2022

international press office

Claim_Brand Industry

T. +39 0422 633865

sara.saltarelli@claim.it

Montbel Srl

Sales office

Via Braiduzza, 8

I-33048 San Giovanni al Natisone - Udine - Italy

T. +39 0432 743147 / 743233

F. +39 0432 743807

Head office

Via D. Scuole, 30

I-33044 Manzano - Udine - Italy

T. +39 0432 750784

F. +39 0432 740279

www.montbel.it - montbel@montbel.it

I colori chiari non devono essere messi a contatto con tessuti e capi di abbigliamento trattati con coloranti non fissati (ad esempio jeans o derivati) o con scarse solidità di tintura, onde evitare macchie e aloni di coloranti di cui non possiamo garantire la pulitura. Vi informiamo di non poterci ritenere responsabili di danni causati dall'uso improprio dei nostri spalmati.

To avoid permanent stains, light coloured products should not be brought into contact with textiles and clothing coloured with unfixed dyes. We cannot guarantee the ability to remove unknown dyes from light coloured products. Please note that we cannot be liable for damages caused by inappropriate use of our products.

La Montbel si riserva di applicare i tessuti utilizzando il verso più consono all'articolo prescelto.

Unless specified otherwise Montbel will use its discretion to determine the direction of fabric than best suits the model selected.

